



Discussion Groups NEWSLETTER

Convener's report

Christmas is fast approaching with all that entails. Sadly, our Discussion Groups have a short break over this period. We usually find that different groups decide amongst themselves just how they are going to approach their get-togethers over this period.

Usually, the groups that meet at the beginning of the month continue for December but don't start again until February. The groups that meet towards the end of the month forgo their December meeting and start again at the end of January. However, it is up to each individual group to decide on that.

The Discussion Groups have held fast through the worst of Covid -19, lock down and the worst of the winter weather. Your Committee's thanks go to all facilitators and hosts for continuing on throughout all this upheaval.

Hopefully with a vaccine on the horizon the worst is over, at least for our small country. I can only guess what Christmas will be like for some people in the countries hardest hit like America. Very bleak and lonely as well for a lot of folk I would think.

We do have new ideas in the pipeline for next year as far as the Discussion Groups go – so it is a case of watch this space.

Art Collections

Facilitator: Moya Smith
Third Wednesday, 2 pm
E: moya.smith@xtra.co.nz

Book Group

Facilitator: Garda Cortesi
First Friday, 1.30
E: gardacortesi@gmail.com

Dining Group

Facilitator: Ann James
Third Friday, 7 pm
E: anniejgm@gmail.com

Expanding

Musical Horizon (full)

Facilitator: Paul Wheeler
Second Monday, 10 am
E: wheeler@outlook.co.nz

Film Group 1 (full)

Facilitator: Bill Stanford
Third Wednesday, 1.30
E: billstanford9@gmail.com

Film Group 2 (full)

Facilitator: Bill Stanford
Second Wednesday, 1.30
E: billstanford9@gmail.com

Gallery Group (full)

Facilitator: Tash Hurst
Second Wednesday, 10.30
E: tash.hurst@xtra.co.nz

German Language

Facilitator: Rob Lawson
Third Monday, 2 pm
E: roblawson75@gmail.com

The Discussion Group committee wish to join me in wishing you all a Very Merry Christmas and the very Happiest of New Years. Enjoy the celebrations and enjoy your families and holidays.

We will see you all back here in 2021!

Ngaire Bates



Announcements



The Podcast Group...

has been meeting and having planning sessions, but hasn't really got off the ground. However, we will be starting up properly in February – so do let Garda know and come along.

Podcasts are for everyone – if you've an interest, there'll be a 'cast you can gain from.

The Gallery Group

Our next visit is to Ross Grimmett on Dec 9th, followed by a get together at Tash's place to brainstorm ideas for next years' programme.

The calendars will be here so please remember to bring your \$20 for those who have ordered/ would like one.

The Mah Jong Group

Those interested in the learning the rudiments of the game or refreshing a long ago Mah Jong practice are most welcome to join us.

Please contact Hilary Allison via email on hilary.allison@xtra.co.nz or by 021 393 323. A schedule of the 2021 meeting dates will be posted on the U3A website shortly.

Local History

Facilitator: Stuart Strachan
Fourth Wednesday, 10.30
E: sistrachanz@gmail.com

Luncheon Group

Facilitator: Patricia Irvine
Second Friday, 12.30
E: trishjockloch@gmail.com

Mahjong Group

Facilitator: Hilary Allison
Second Thursday, 10 am
E: hilary.allison@xtra.co.nz

Monday Current Affairs (full)

Facilitator: Joy Hayward
Third Monday, 1.30
E: joyhayward@hotmail.co.nz

Opera Group

Facilitator: Garda Cortesi
Fourth Wednesday, 1.30
E: gardacortesi@gmail.com

Photography Group

Facilitator: Ngaire Bates
First Wednesday, 1.30
E: ngairemichael@gmail.com

Podcast Group

Facilitator: Garda Cortesi
Second Thursday, 1.30
E: gardacortesi@gmail.com

Thursday Current Affairs

Facilitator: Clare Hamel
Fourth Thursday, 1.30
hameldownunder@yahoo.com.au

Tuesday Current Affairs (full)

Facilitator: Gretchen Kivell
Third Tuesday, 10 am
E: gretchen.kivell@xtra.co.nz

Walking Group

Facilitator: John Hogue
Every Thursday, 10.30
E: hoguetimaru@xtra.co.nz



Facilitators' Reports



Gallery Group

A big "Thank You" to Laurie and Rosemary White for organising such a stimulating trip to visit galleries and artists in Clyde, Cromwell, Bannockburn and Lawrence.

Firstly we stopped for morning tea at the bakery in Clyde and visited The Eade Gallery. The range of quality art on display set the standard for the rest of the trip.

There was jewellery, paintings, pottery and photographs, and we visited some of the artists later whose work was on display.

Melanie Eade explained the philosophy and history of the gallery and many of us couldn't resist the odd purchase.



Next stop was Hullabaloo gallery which is run by a collective of artists in Cromwell. Here Gail de Jong spoke to us about how the collective works, and the work on display -- one of the artists had work made from cable ties, certainly a different approach than the more traditional paintings. Gail had amazing paintings in the gallery that many of us fell in love with..

Gallery Group (cont.)

Also in The Heritage Precinct we went to the Octa Gallery that specialised in prints and lithographs.



Many of us checked into the motel and then on to Rachel Hirabayashi's studio and workspace.



Her cottage garden was delightful and her work area, amazing. Rachel works on lots of paintings at once, as several layers of paint are required, so the cottage was pretty full of art work in various stages of completion.

We all assembled at The Stoaker Room, Cromwell, for a lovely dinner in the evening.



In the morning our first visit was to Alan Waters Gallery just beyond Bannockburn. This gallery fascinated many of the group where Alan's quirky sense of humour made for amusing stories and viewing.. He had a huge range of art work from large scale sculptors to little illustrated poems. Here is an extract from a web page about Alan:

The Extraordinary Art of Alan Waters

Alan is well-known throughout New Zealand and abroad as a major artist. He consistently produces a wide-ranging variety of scenes and images which often defy logic as well as challenge the viewer's perceptions.

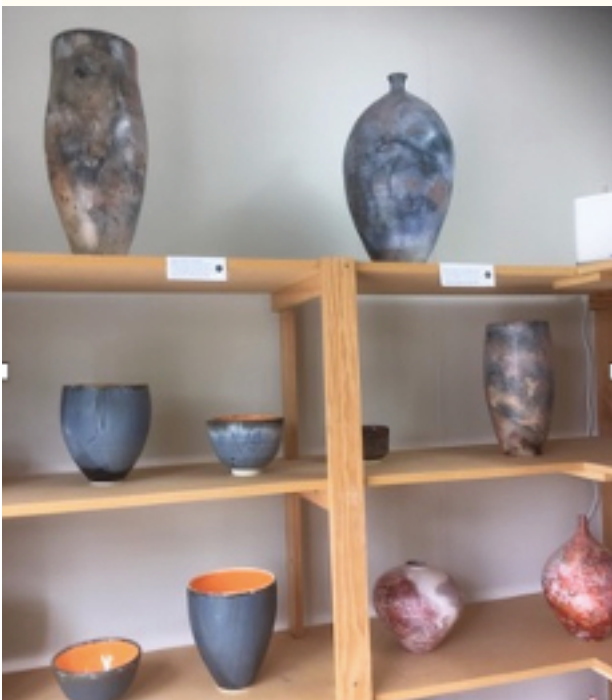
Gallery Group (cont.)

Alan Waters...

His unique position in the art world derives from the startling ideas conceived from the 'disbelieving element of the unexpected' – and these he has in abundance.....



In Bannockburn we went to see ceramist Robert Franklin who gave us an excellent description of how a pot is created and finished, including a demonstration on the wheel. Here are a few of the pots that he had on display. The finishes were wide ranging with different techniques used to create interesting effects.



We had lunch at The Black Rabbit and then headed to our final artist in Lawrence recommended by Sue. When we got there it all seemed locked away but we eventually found our way in to Andrew Tischler's studio. Andrew teaches art via tube and has thousands of followers around the world. His main painting has taken several years but is nearing completion. Quite an extraordinary visit to an extraordinary young artist that left us all "amazed"!



The weather was kind and I think we all came back slightly incredulous that this area of Central Otago has such a great number of creative people in our own beautiful hinterland. A wonderful and very worthwhile couple of days.

Tash

Mah Jong Group

The U3A Mah Jong group now meets at the Beth Anderson Lounge at the Otago Golf Club every fortnight, 10.00am until 12 noon for a fee of \$3. The next sessions are on 26 November and 10 December.

The membership remains small, with most times two tables operating. Members attending, practice different hands and discuss their success (or not) as a learning process often amidst much laughter.

The Dining Group

The Dining Group currently has 17 members and we meet on the third Friday monthly. Since the middle of this strange year we have dined at the following venues.

Ironica
Paasha Turkish Cafe & Restaurant
Equinox Bar & Restaurant
Salt Cafe and Bar
The Jitsu
Luna Cafe and Restaurant

Our recent dinner at Luna Bar and Restaurant in November was enjoyed by all and we celebrated the last meeting of the year with a lucky dip Santa surprise.

Attached is a group photo taken at Salt Cafe and Bar. Ngaire appears to be hiding from the camera.

As the year has progressed it has been enjoyable for the group members to get to know each other and share their experiences and thoughts about a variety of topics.

I am enjoying both the social side, and of course, the various culinary styles. We try to choose venues that afford conversation (not too loud) and easy access.



I've handed over the organisation for next year to Karen Wards. Thank you Karen for taking this on. Karen's email contact is karenwards@gmail.com

Wishing all a very happy and healthy New Year.

Ann James

Expanding Musical Horizon Group

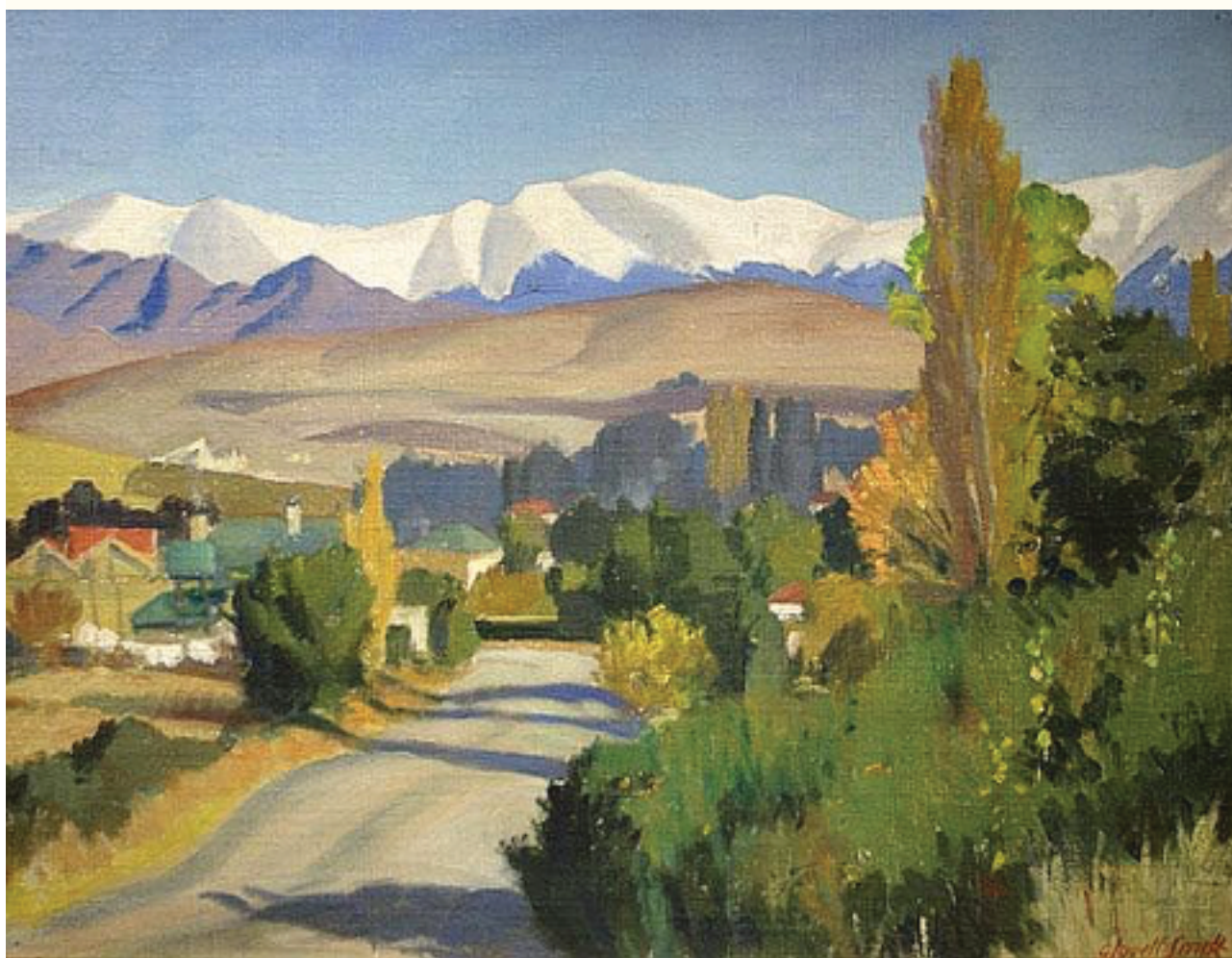
In our October and November meetings, we investigated New Zealand music from the mid-1800s. We listened to a mix of folk, classical and popular music and we noted the increasing influence of Maori music on European styles and vice versa within these genres.

In the early days of European settlement, folk music was based on the songs and styles settlers brought with them from their countries of origin. Words were changed to tell of goldmining, gum digging and local history, as well as continuing the universal themes of love, sadness, and war. Over time, folk and popular music developed a distinctively New Zealand style of its own. We listened to popular music that provided snapshots of life in New Zealand, current events, political commentary, social commentary and history and we investigated a range of back stories behind the songs that were once high on the hit parades.

Expanding Musical Horizon Group (cont.)

Classical music featured throughout the series, and we considered the development of a distinctive national style, especially Douglas Lilburn and his contemporaries.

While at the University of Canterbury, Lilburn developed stimulating friendships with writers Denis Glover, Allen Curnow and Ngaio Marsh, and artists including Rita Angus and others who were developing styles that broke from the tradition of British landscape artists. Among that group of artists were Colin and Rata Lovell-Smith, who were the great-uncle and great-aunt of one of our group members. We featured Dunedin composers (among them Anthony Ritchie and Richard Madden), and Peninsula resident, Gillian Whitehead.



Colin Lovell-Smith - Waikari, North Canterbury

A highlight was having one of our group members, Ian Winter, perform the Gin and Raspberry (a Martin Curtis song about mining in the Cardrona Valley), and Down the Hall on a Saturday Night (a Peter Cape song that took a snapshot of rural social life in the 1950s). Ian is a talented guitarist and singer. A third session in the series will be covered some time in 2021.



Rita Angus - Mountain Biological Station

Notice Board

Hi Facilitators! December/January group reports scheduled are: Opera, Diners, Singing, Photography. Thanks!

And everyone, don't forget -- this is your spot. If you have a pup to give away, a tip re a coffee shop, a flat to let -- this board is a way to reach the U3A membership!

Groups Committee

Discussion Groups Convener
Discussion Groups Committee
Discussion Groups Newsletter

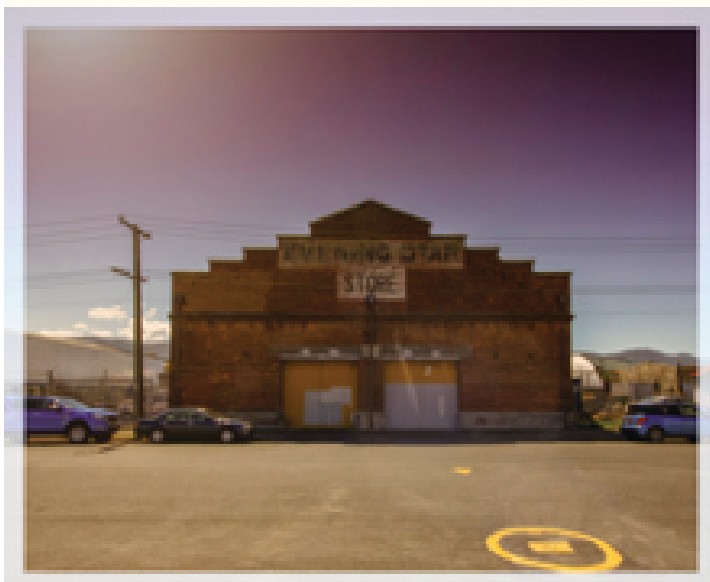
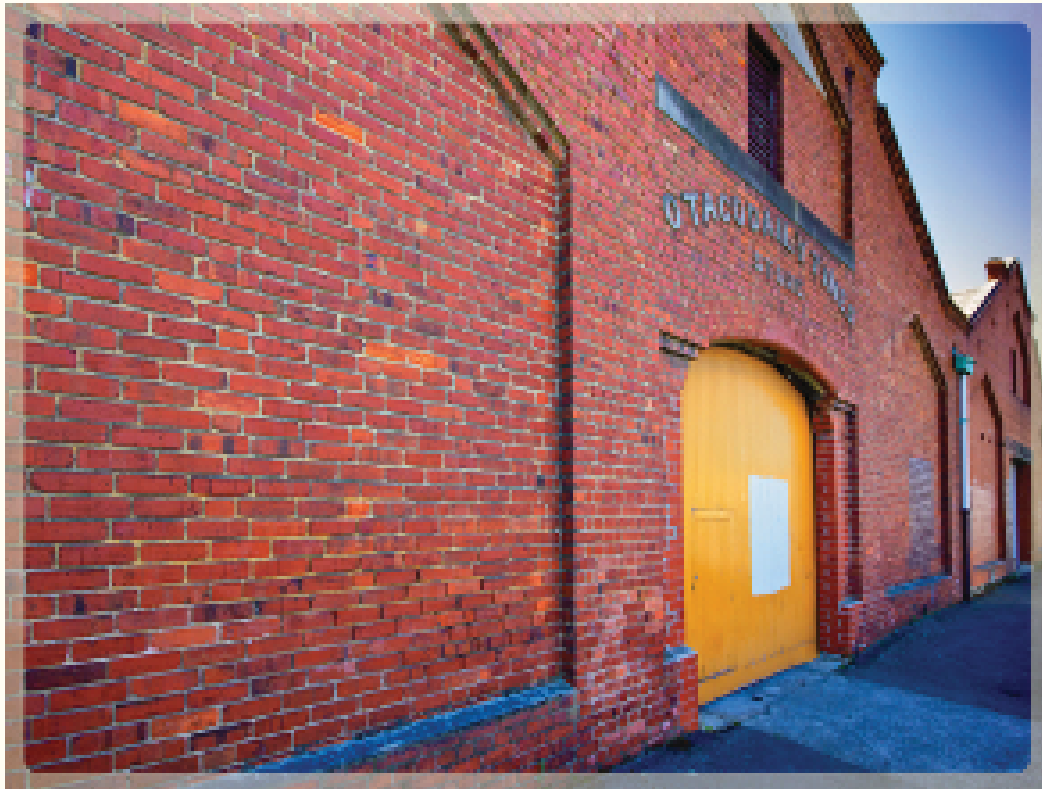
Ngaire Bates
Garda Cortesi
Bill Stanford

ngairemichael@gmail.com
gardacortesi@gmail.com
billstanford9@gmail.com

Photography Group Gallery

The Photography group finally was able to get up and running this past month with four keen members having an interesting wander around the wharf area which is about to have buildings pulled down and others eventually rebuilt on the sites. They were able to get some great photos. Perhaps some of these may even eventually find their way onto the U3A Dunedin website Gallery...

Chris:





Gary:





Ngaire:

